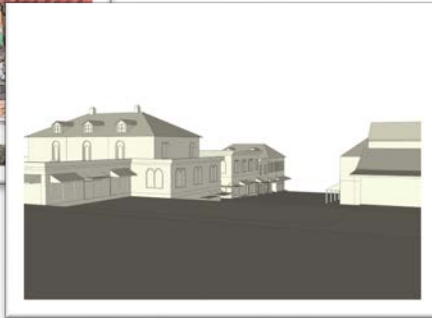


Comprehensive Master Plan



2006 TO 2010

Project Highlights:

- Participation of equity ownership in 850 acre mixed use resort development;
- Complete management of project to include 27 hole golf course, equestrian center, and yacht club;
- Acquisition of three adjacent parcels to accumulate advantageous market position;
- Completion of PIF debt to finance public improvement;
- Negotiation of water rights and grey water usage plans;
- Environmental analysis and petition to Virginia DEC for marina approval;

**COMPLETE
DEVELOPMENT
MANAGEMENT OF
850 ACRE RESORT**

**3,500 LINEAR FEET
OF FRONTAGE ON
SMITH MOUNTAIN
LAKE, VIRGINIA**

**PROJECT TOTALS
MORE THAN 650
RESIDENTIAL UNITS,
EQUESTRIAN
CENTER, YACHT
CLUB, AND GOLF
COURSE**

**FULLY ENTITLED
PROJECT SOLD
PRIOR TO
COMPLETION**

SAHALE RESORT

Smith Mountain Lake, VA

Project Lead: Brad Kuskin

